

# **Terapia inalatoria delle alte vie aeree**

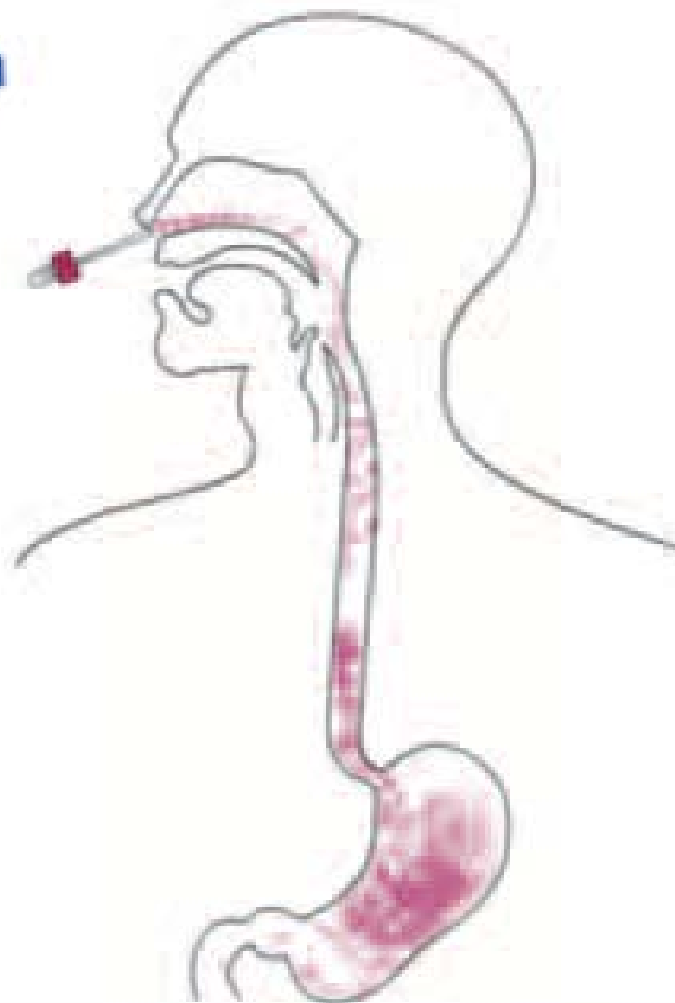
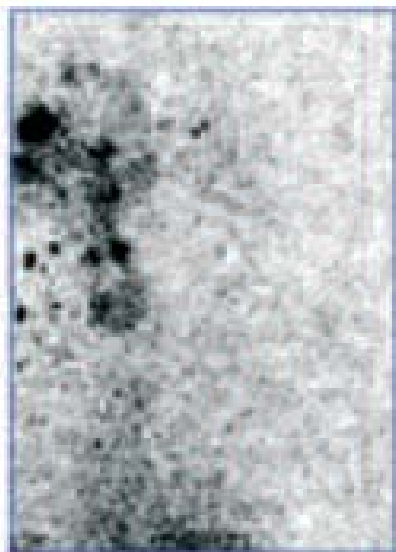
Da A. Varricchio

Area Pediatrica febbraio 2009

**TECNICA NON INDICATA**

**La Terapia Inalatoria  
delle V.A.S.**

**Gocce nasali**

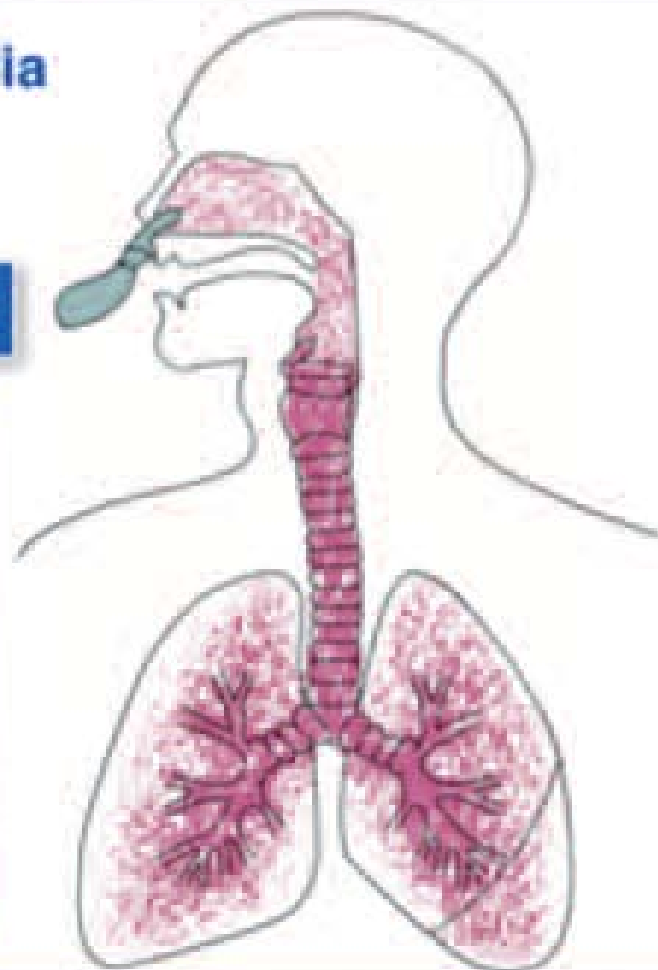


**GOCCE NO!!!**

## La Terapia Inalatoria delle V.A.S.

**Forcino**

*Laringe e Trachea*

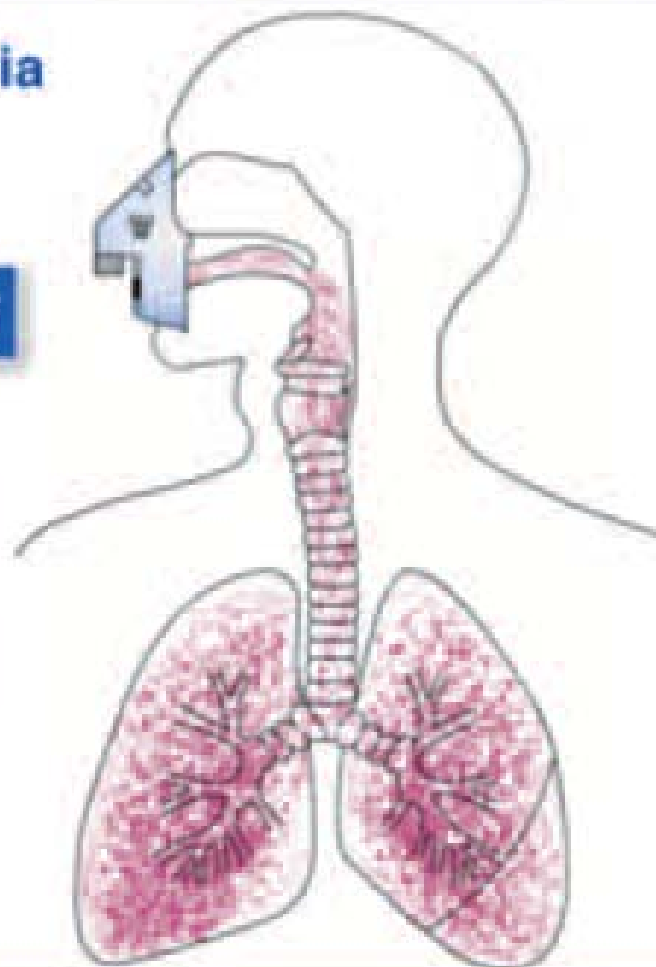


V.A.M.  $< 10 / > 5 \mu\text{m}^*$

## La Terapia Inalatoria delle V.A.S.

**Mascherina**

*Bronchi e Polmoni*

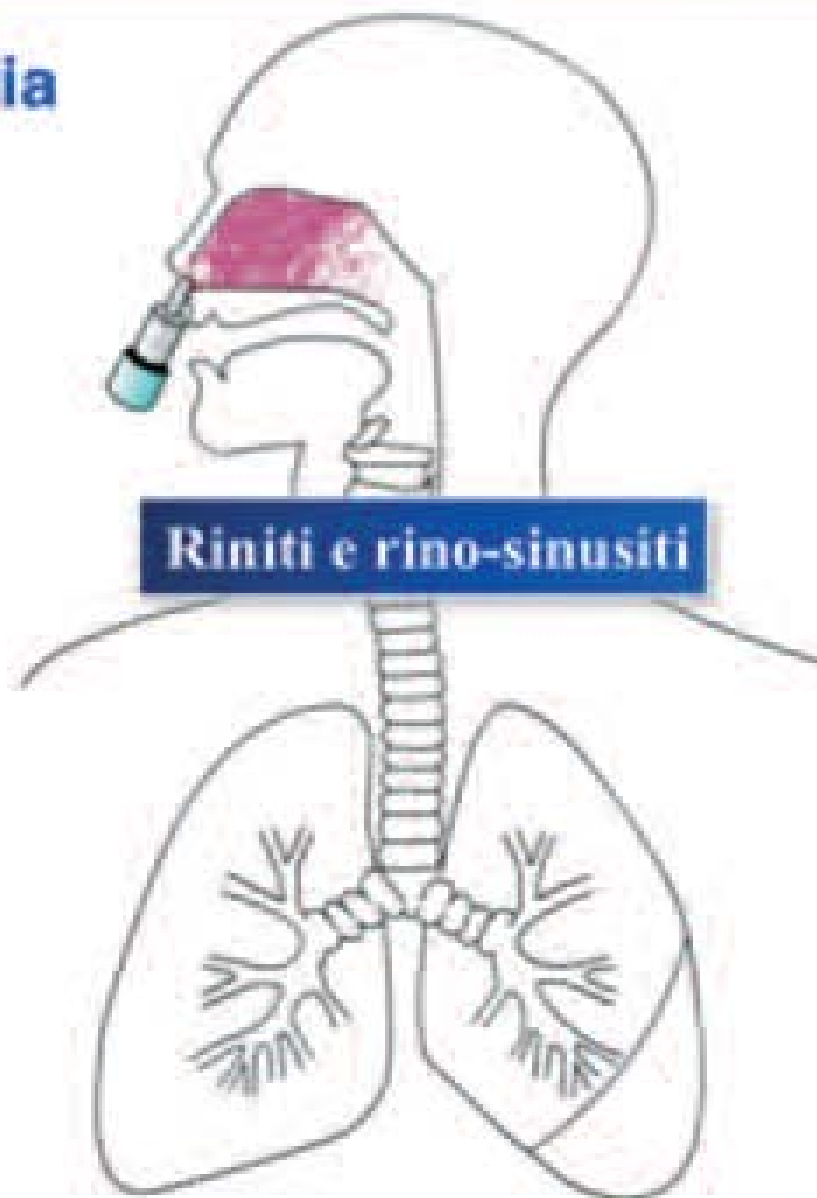
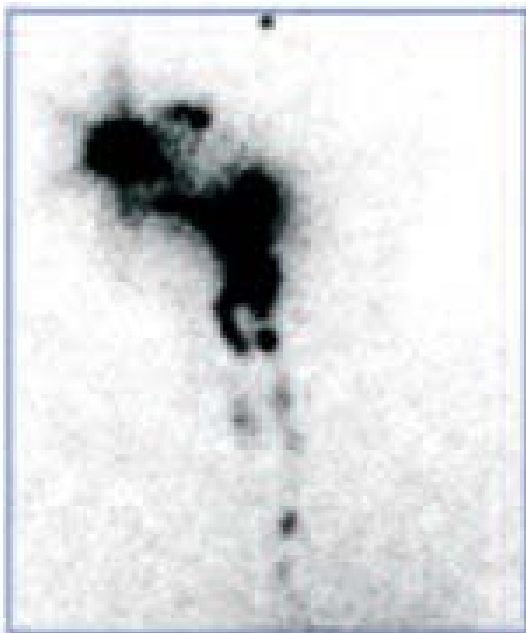


V.A.I.  $< 5 / > 2 \mu\text{m}^*$

## La Terapia Inalatoria delle V.A.S.

**Spray  
predosato**

*COM e RSE*



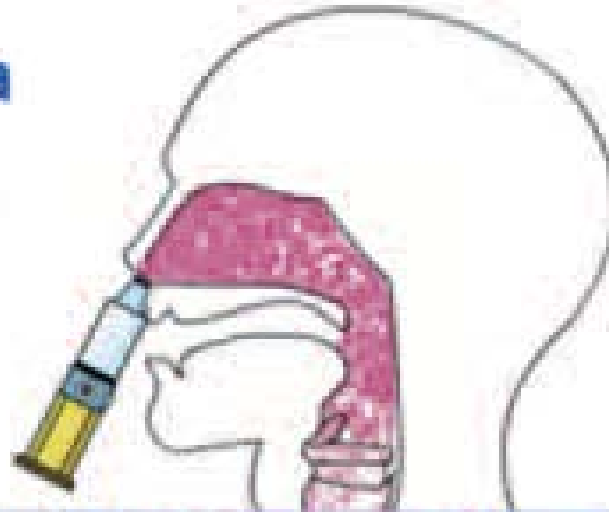
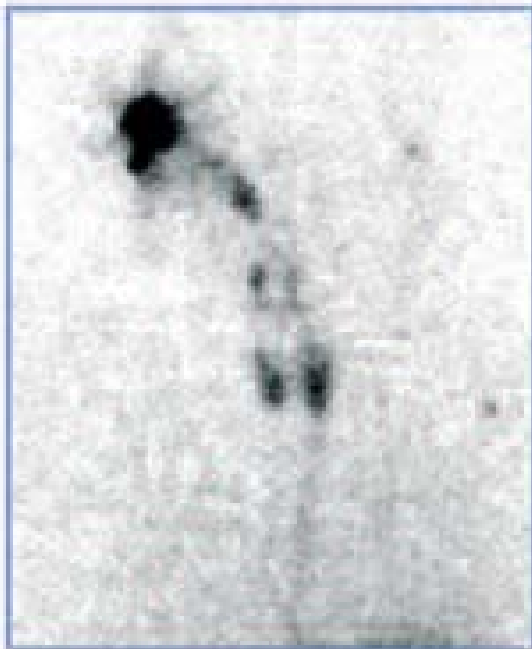
**Riniti e rino-sinusiti**

## La Terapia Inalatoria delle V.A.S.

**Doccia nasale "Rinowash"**

1. 100 ml soluzione

*COM - RSE - RF*



**Riniti, rino-sinusiti e rino-faringiti**

